



Fair Family



NEWS

LETTER

Volume 1, Issue 5

STATE OF THE PEACH 1992

J. R. Robinson

This has been an amazing year.

We have made progress in many areas and have had setbacks in others. We resolved many of the old conflicts and created some new ones. Basically, it has been a typical year in the life of the Oregon Country Fair.

Some of the progress:

- All new employees and mostly new Board of Directors and yet we put on another great show in July. A show that 50,000 people came to see.
- Did our best to put on a Grateful Dead show in August.
- We are building a new residence for the caretaker.
- Started a Neighborhood Response Team to work with our neighbors and to address their needs.
- Adopted a section of Highway 126 between Veneta and Noti and are responsible for keeping it clean.
- Started a newsletter to increase communication within the Fair family.

Some of the setbacks:

- We put on a great show that 50,000 people came to see.
- We had increased violence in the parking lots.
- We had increased alcohol sales in the parking lots.
- We had increased need for support from the police to maintain a safe environment for the public and the staff.
- We have not developed a budget process that meets the needs of our changing organization.
- We have not addressed the problems of growth and population.
- Although we are very close, we have not put any money into an endowment fund.

Where We Are Today:

My favorite analogy is that we are in our adolescence as an organization. We have the size and strength of an adult but not the wisdom. We have the energy and optimism of a teenager but lack the adult



decision making experience to understand how to effectively utilize this energy. We have spent 20 years in our childhood focused on our own family and how to

protect ourselves from the outside world. The communities around us are very aware of us and many of the Fair family are wanting to move out into the world that surrounds us.

This year we have donated money to the multi-services building in Veneta and to a state-wide ballot measure. While both of these expenditures were worthwhile, they are only two of hundreds of interesting and important projects within our world that we might choose to be involved with.

What we choose and how we choose will be defining factors in what kind of adult we are to become. So, how do we transition from this emotional, impulsive adolescent to a mature thoughtful adult, and at the same time keep the magic, the creativity, the wonder and the excitement.

Continued on page 3

Pathways of the Caretaker

by Erica Lerch, News Editor



The job description is deceptive, making little mention of the time and energy spent on creative problem solving, diplomacy, and community relations. Bill Verner has to think of the best solutions with regard to present and long term goals. He does what he can to ensure positive relations with the local community, including receiving feedback and maintaining good working relationships with the locals and the Sheriff.

As Caretaker, Bill encourages and directs volunteer projects, working and playing closely with the Vegemanees. He is a long time Vegemania, c with more than 200 annual hours of volunteer vegetation management and erosion control. He feels that his experience with the Vegemanees has helped him discover the needs of the Land and ecologically sound ways

of filling those needs.

He has strong spiritual ties with the Land and he's happy that he can see the wildlife thriving. Bill finds the most enjoyable part of his job "...walking on the site in the early morning. The air is clean, cool, crisp, and quiet; wildlife abounds."

His contacts with indigenous fauna have ranged from animal eyes in the moonlight, the sharp yips of the foxes and exultant cries of the screech owls, to close encounters with deer and watching beaver at swim, eat and play. This rainy season he is looking forward to "canoe rides on the flooded site."

Bill Verner has been with Security for many years. He has coordinated and organized a crew of 22, the 2-7pm shift at the

Continued on page 3

What's Inside

Calendar and Board Election	
Results.....	2
On the Air.....	6
Seeds and Stems.....	8
Ode to the Babemobile.....	6
Fuzzy.....	5
Evaluation Meeting Report.....	7
Letters.....	5
Minutes.....	10-12
Underwriting.....	9

OREGON COUNTRY FAIR
P.O. Box 2972
Eugene, OR 97402

ADDRESS CORRECTION REQUESTED



NON PROFIT
U.S. POSTAGE
PAID
EUGENE, OR
PERMIT 545

FLASHES



CALENDAR

- Oct. 31 Meeting to discuss future crewdom for Vegmanecs. At the Fair site, at Noon.
- Nov. 10 Board of Directors Meeting, WOW Hall, 8th and Lincoln, Eugene, 7 p.m. Election of officers (President, Secretary, Treasurer).
- Nov. 18 Information Meeting about non-profits. With Russell Poppe, Douglas Beauchamp, Studio One, Hult Center, 7:30 p.m.
- Nov. 18 Community Village General Meeting, Whiteaker School Cafeteria, 7 p.m.

Calendar input-Carol Bull, 935-2768



Deadline November 1!



Congratulations to our new Office Manager, Camille Cole!
 Also, Thank you to all of the highly qualified people who applied for the job!

Help Wanted

Would, should, could all the Board of Directors members who voted NO on the front end loader come on site to turn compost by a square point shovel? No forks allowed. Plus move sandbags, etc., etc.

David Hoffman
Community Village, Vegmanecs



Happy Halloween!

Congratulations New Board Members

Congratulations to the following who were elected to two-year terms on the Board of Directors at the annual meeting, October 18, 1992.

Daniel Dillon
Food booth representative

Bob Durnell
Recycling coordinator

Martha Evans
Community Village (elected as an alternate)

Paxton Hoag
Water crew

Jack Markarchek
Construction coordinator

Jeanne Sharpy
Commemorative Sales

**TO LEAVE WITH A SMILE
IS TO
FOREVER RETURN.**

REGGIE



STAFF ASSIGNMENTS

- Norma Sax Editor / PageMa
- Erica Lerch News Edi
- Mary Shuler Layout Edi
- Carol Bull Nuts and Bo
- Brad Lerch Business Mana
- Wally Slocum Reporter-at-La
- Kelly Campbell Associate Edi
- Michael Ottenhausen Assista





Continuing Pathways...

admissions area, and works closely with the Greeting crew, Admissions, Main Camp, and Traffic.

He gets to see about 95% of the public enter and/or leave during this shift. He enjoys it immensely because it is challenging, busy, and very rewarding. He sees positive results in smiles and laughter.

He and his crew have had a lot of fun with the

addition of the Dragon admission area, and feel it has helped to reduce the largest bottleneck of the Fair.

Bill's living situation is looking up, with the decisions made by the Board to create a socially responsible, energy efficient residence for the Caretaker. He is really looking forward to "mouse-, fume-, and draft-free living."

The finally approved structure plans were submitted by Oregon Yurtworks, a Fair Booth for about 12 years. Additional steps planned to in-

crease energy efficiency are: 12 Volt solar power; a Copper Cricket water heater; a Russian style, Kochlaven stove, and passive cooling.

Bill is grateful for access to the latest information on alternative energy, socially responsible living styles, organic foods and information helping to strengthen his ties with the Land.

"The air is clean, cool, crisp, and quiet; wild-life abounds."

Bill has recently been concentrating on the logistics of a caretaker's crew, a proposed shirted crew of five people committed to the completion of groundskeeping to be done just before Main Camp opens until after its conclusion. They would work under the Caretaker's direction with a relationship with the Caretaker similar to that of the back-up-managers with the General Manager. The Caretaker's Crew will be familiar with Vegemanec and Construction projects and be open to facilitating volunteer participation for completing ongoing opera-

tional projects.

Another aspect of Bill's job includes massive communication needs; "the lines of communication are open between myself, the B.O.D. and the GM although I would like to see greater involvement from the Fair family in working towards solutions to 'Reefer Madness'—too many refrigerators on site."

His increased need for internal communications have given him "eye-opening experiences on all of the behind the scenes energy it takes to coordinate the Oregon Country Fair." He would like to remind everyone that "there are numerous projects slated for completion this fall."

Bill has a challenge, a purpose and drive. He is dedicated to the Fair and his exuding happiness and self-fulfillment make the Fair site a Mecca for people wanting to dig in the dirt and nurture their Fair roots all year long.



Animal Caretakers

The site security system is also Bill's best friend: "Beck's," a German Shepherd brought home in a Beck's beer box.

She is 9 years old and enjoys rolling in stinky things (like the fishmeal used for grass fertilizer), and playing catch with anything that can be thrown. Frisbees are her favorite, with tennis balls a close second.

Fishmeal, the resident feline in charge, was abandoned at the '91 Fair and now escorts Bill on his jaunts around the property. She also catches many rodents in the Warehouse and deposits them as her species is inclined, underfoot.

Two rapidly growing kittens named Harley and David frolic at Main Stage under the watchful eye of Fishmeal.



Our Needs

First and foremost—develop long and short term goals for the OCF organization. Long-term planning is important, but without goals, it is difficult or impossible.

Last year we had a two-hour training on developing goals. It was just long enough to clearly outline our great need for and lack of long-term goals. I strongly recommend that we hire the same trainer (or anyone else who has the experience) to come in and help us with this process.

Peach Continued...

The participants at this training should include: the Board of Directors, the officers of the corporation, the employees, the Long Range Planning Committee, our financial planners or Budget Committee, representatives from the Crafts Guild, the Food Booth Committee, Entertainment, and the coordinators. That's about 60 people and I probably left out a few.

Our Board needs long terms goals that are defined by the entire Fair family to help guide them through the decisions

that are to come. I believe that it will be a long process but with well established long term goals most of our decisions will be much simpler and the longer we put it off the harder we make things for ourselves and our Board.

I want to thank the Fair family for the opportunity you have given me to serve this incredible organization over the last two years.

It was an opportunity to work with and get to know a group of people that I have come to love and respect. It

has been an experience that I will always remember and cherish.

I look forward to my future involvement and participation in this magical world we call the Oregon Country Fair.

Long Live the Peach,
JR Robinson
President, OCF



We Oppose Measure 9

Oregon Event Enterprises

Doe
Ichabod
Spring
Diane Albino
Janine Alea
Toby Alves
John Anthony
Gwen Bates
Sue Barnhart
Christina Bauske
Nancy BeBout
Nico Brun
Susan Bryan
Carol Bull
Venus Burkett
John Chambers
Thom Chambliss
Camille Cole
Michael Connelly
Katie Cousins
Cliff Cox
Lillian Darwin
Shirley Demaline
Daniel Dillon
John Doscher
Heidi Doscher
Charles Drew
Skeeter Duke
Bob Durnell
Jain Elliot
Forrest Elliot-Farren
Martha Evans
Bob Fennessy
John Flannery
Chelsea Gerlach
Mary Gillan
Phil Guyette
David Hale
Ceredwyn Harper
Maureen Harryman
Anne Henry
John Higby
Paxton Hoag
Kristen Inmann-Wilson
Cheryl Jones
Jenny Jones
Ethan Kegley
Cindy Chambers
Jeff Land
Brook Leaf
Mike Lee
Johann Leighty
Brad Lerch
Erica Lerch
John Lerch
Jill Liberty
Roy Lisi
Kathryn Madden
Serenity Maestas
Jack Makarchek
Robin Marks-Fife

Registration
Communications
Childcare
Community Village
Security
Tofu Palace
Water
Craftsperson
Community Village
Main Camp
Energy Park
Admissions
Security
Newsletter, Crafts Inventory
Main Camp Kitchen
Crafts Inventory
Crafts Inventory
History Booth, Office Manager
Community Village
Construction
Communications
Main Camp Kitchen
Registration, Solutions
Board, Food Booth
Security, Vegmanec
Mailing Coordinator, Security
Construction
Community Village
Recycling, Board
Community Village
Community Village
Community Village
Community Village
Community Village
Teen Staff
Fair Family
Admissions
Traffic horse patrol
Traffic horse patrol
Solutions
Peach Pit, Board
Community Village
Water, Board
AAAA
Visitor
Visitor
Information
Community Village
Community Village
Construction
Entertainment
Traffic
Security, Newsletter, Vegmanec
Security, Newsletter, Vegmanec
Vegmanec
Childcare
Solutions
Archaeology
Multiple areas
Construction, Board
Community Village



Steve Marks-Fife
Barry Martin
Mike Martin
Rafael Martinez
Shannon McCarthy
Laurie McClain
dahinda meda
Bert Miller
David Mitchell
Lynn Morris
Ed Moye
Santos (Toes) Narvaez
David Oaks
Michael Ottenhausen
Hawk Owl
Palmer Parker
Charles Perevlick
Jon Pincus
Russell Poppe
Mira Rainy
Norah Roberts
J. R. Robinson
Erica Robinson
Peggy Rossignol
norma sax
Deni Schadegg
CC Schwartz
Zak Schwartz
Leslie Scott
Dawn Scuteri
Frank Sharpy
Jamie Sharpy
Jeanne Sharpy
Jon Sharpy
Michele Sharpy
Tony Sharpy
Arna Shaw
Mary Shuler
Geoffrey Silver
Nance Sledge
Wally Slocum
Carolyn Smith
Reggie Soto
Dick Stewart
Sands Stockwell
Andy Strickland
Bear Sullivan
Cory Sullivan
Don Tada
Grace Tara
Janet Tarver
Lawrence Taylor
Al Thomas
Dennis Todd
Cay Tompkins
Charlene Tremayne
Bill Verner
L. K. Warden
Dianne Weiker
Mick Westrick
Brian Wilga
Mother Zosima

Community Village
Recycling
Member
Member
Booth
Community Village
Security
Construction
Community Village
Charter Member
Archaeology
Member
Community Village
Traffic, Newsletter
Traffic
Stuff
Construction
Water Barrells
Fair Attorney
Sauna
Information
Traffic, President
Traffic
Booth Rep
a bunch of things
Inventory
Medical
Medical
General Manager
Craftsperson
Fire Crew
Quartermaster
Commemorative Sales
Inventory
Admissions
Inventory
Fair Central
Newsletter, Traffic
Security
Recycling, Treasurer
Banners
Food Booth
Traffic Horse Patrol
Recycling
Community Village
Sign Painter
Entertainment
Entertainment
Traffic
Main Camp Kitchen
Community Village
Sanitation
Visitor
Construction
Security
Water, Flowers
Caretaker
Fair family
Entertainment
Computer crew
Member
Entertainment

From the Editor

Norma Sax

For the first time, I am writing an editorial in this newsletter. I'll try not to do it often.

On the Oregon ballot is Measure 9, which in my interpretation would legalize discrimination against homosexuals. At its last meeting, the Board passed, 7 to 3, a motion to take a formal stand against Measure 9 and contribute \$1,000 to the organization working for its defeat. One argument against was, "It's not appropriate for the Fair to get

involved in political issues."

I think it is not only appropriate for the OCF to get involved in this issue, it is incumbent upon us to get involved. We must do anything we can to make sure this garbage never sees the light of our state constitution.

Isn't the peach about alternative lifestyles and freedom of expression and choice? Doesn't the peach open up our hearts and our minds, doesn't it give us more and more room

to fit love in? Measure 9 doesn't believe in the peach. Measure 9 wants to destroy everything the peach is about.

Measure 9 wants to tell us who can be at the Fair. Imagine that, they (the supporters of Measure 9) want to tell us we can't have gay people at the Fair. Since when is it not appropriate for us to say "screw you" to anyone who tells us who we can and cannot have in our family?

Continued on page 5



Letters



Dear Editors:

I'd like to clarify a comment I made in the September General Manager interview, as I am concerned that there are some people who have misunderstood both its meaning and my reasons for making it.

There were two entirely separate parts of the interview in which I referred to "insiders and outsiders," and unfortunately in the published article they were juxtaposed.

My reference to an insider being replaced by an outsider was made in the context of wanting to acknowledge and appreciate the very difficult dilemma the OCF found itself in, and that someone with an incredible amount of history and experience with the Fair was replaced by someone with a very different and much more peripheral experience.

I meant nothing at all de-

rogatory by it, and want to make sure that everyone knows I have nothing but respect for Arna Shaw who has consistently acted with integrity and generosity towards me, and whose counsel I continue to seek.

Thanks very much for providing this forum.

Leslie Scott
General Manager

Dear Editors:

We are a few short days away from the elections, the "un-Fair" real world elections. It's good to know that whatever the outcome, it doesn't matter who is president or senator, the Fair will continue the tradition that has drawn us together for so long.

There is one ballot measure however, that if passed could eventually harm all of us that choose an alternative lifestyle—Measure 9. The OCA has a long agenda; discrimination against homosexuals is just this year's topic.

Last month our Board took a stance on a political issue, which may be a first. They also agreed to donate \$1000 to Lane County No on Nine. Many of us felt this was graciously given but feel that it is within our means to do much more.

Many of you signed a petition asking the Board to make a more major contribution. According to our by-laws a quorum of 200 members and a special meeting is necessary in order for the membership to direct the Board, which seems to be an impossible task to accomplish before the elections.

The OCA is not going to go away, unless they are trounced

in the election. Given the amount of people that want everyone to be just like them, this and related measures that want to take away freedoms from individuals will keep surfacing into our political homefront.

We, as an educational non-profit organization dedicated to alternative lifestyles, set the example by living with diversity and grace. We also owe it to ourselves as an organization to do everything in our power to defeat Measure 9.

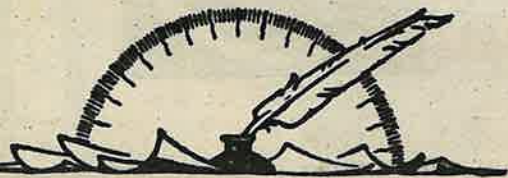
Let's gather momentum now for the long haul and decide how much our freedom to be who we are is worth to us. Let your Board members know.

Soon, an endowment committee will be in operation that will need membership input. We have the funds, the human resources, and the imagination to make a difference.

The No on Nine Lane County Committee will be deeply in debt after the elections. The Gay and Lesbian community is drained of financial resources from this expensive political battle. Whatever the outcome on Measure 9 our help will be sorely needed.

DON'T FORGET TO VOTE ON NOV. 3!

Doe
Registration



Editor continued...

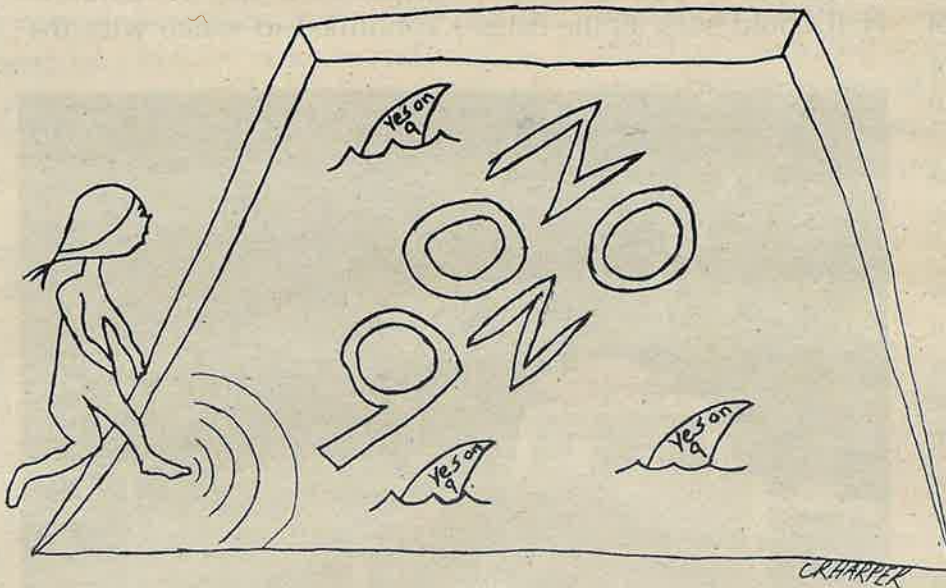
What's next? If this trash passes, they'll tell us that men with long hair are abnormal and women's bare breasts are abnormal and hell, you can't get any more perverse than naked men and women showering together. It's not appropriate for us to get involved?

Maybe I've read too many biographies of Hitler and too many pages from Anne Frank's diary. Maybe I should remember that this is Oregon and the OCF and the fact that the Germans in 1933 said, "it isn't appropriate for us to get involved," doesn't apply here. Right.

One Board member's objection to the motion was that it would offend our neighbors in Veneta. Well, that may be true. But all I can wish for my life and all I can wish for this Oregon Country Fair I love so deeply is that we do everything we can to offend at every opportunity those who would deny us our freedom, invade our privacy, or dare to tell us who we can and cannot love.

The opportunity for courage is not to be missed, dear family. It's knocking at the Dragon right now, and it wants a camping pass real bad.

Fuzzy the Peachead



Don't worry Fuzzy! They won't bite!

Hi. My name is Spring. I am representing a new handcrafts club at South Eugene High School.

In addition to learning and supporting art, our goal is to use skills to benefit youth by raising money to donate to organizations like the Relief Nursery and teen parenting programs. More directly, we are making baby blankets for AIDS babies, making hats and gloves for homeless kids, and so on.

Our first fundraiser will be a craft fair and silent auction to be held the second week in December. If you have goods or services you would like to donate or would like booth information, please call Spring at 683-1568 or Ranee at 465-1020.

Any other help you would like to offer would be great. We would really appreciate the support of the Fair family.





On the Air

Sparks Scott



Our Founding Fathers and Other Interesting Information

In the last few issues of the newsletter, I have discussed some of the equipment that is used to provide communications for the Fair. This month I would like to bring to light some of the many people who have contributed to the formation and continuation of the Communications Crew over the many years.

In the beginning the Fair was a small event, and no radio, telephone, pager or other technical means of processing and distributing information was required. Some time around the 1971 Fair, the first CB radios appeared, and along with them our first Communications Guru, Bill Wheeler.

Bill's passion for communications took many forms. He was the founder of Eugene's

information exchange service, Switchboard, and under his direction, the Fair began acquiring various handheld CB radios.

Bill served as the director of Communications until 1973, when he left to become a driver for Green Tortoise bus lines.

In the beginning the Fair was a small event, and no radio, telephone, pager or other technical means of processing and distributing information was required.

Howard Leighty replaced Bill as Communications Coordinator in 1975, inheriting about a dozen radios in various states of disrepair, with several different, incompatible channels installed.

Howard, who was the radio technician for the City of Eugene, repaired the walkie-talkies. He applied the prin-

ciples of frequency coordination to our small system, putting all of the radios on compatible channels and making sure that channel "A" on every radio would transmit and receive to every other radio in our inventory, etc.

Howard served as coordi-

staff to be scheuled.

Ron also had a far reaching vision of the future of the Fair. Many evenings we sat around his dining room table, discussing permanent water systems, buried telephone cable, FM radios, real telephone switches and bigger and better Fair Central, all of which have only recently become a reality.

Ron left in 1983 to devote more time to his painting business.

Maida Belove brought her touch to Communications for the 1983 Fair.

Our current fearless leader, Ichabod, with his solid background in electronic theory, has helped the Fair to realize yet better service in the transfer and dissemination of the Fair's valuable information resources.

nator until 1978, and is still the Voice of Fair Central to this day, working early mornings.

Ron Saylor brought an impeccable tradition of planning and organization to the position in 1978. The Communications Crew had begun to become an entity in its own right, with budgets to be submitted, equipment purchased, and



Goodby old friend -

It was sad to get the news and it will be sad once again when we return next Fair to find an empty parking space. The nameplate and vacancy will appear as a gravemarker to our faithful beloved friend—THE BABEMOBILE! She has passed on to that great junk pile in the unknown. Though her flatbed will be missed, those memories will live on...

Like the first time we saw her sitting among the other poorly parked vehicles in a space where she should not be. (Was that five or six or seven years ago?) It was hot in the sun, the keys were in the ignition and she knew it was more fun inside the loop. She gladly went with "The Babes" (those hardworking Fairies who clean up pre-Fair) and it was a couple of days before anyone found out that she lived with a man named Bob (who had left her while he went to Portland with SOMEONE ELSE).

Over the years she endeared herself to many but none so appreciative as "The Babes."

She was just the right size...she could haul duff, brush, and dimensional with the best of our "visiting dumpsters." She hauled 'Wally benches' back and forth and back again—straining at the springs but always sputtering forward...and always

delighted when the load was off so she could "cut a couple of cookies" in the Dead lot out of the view of the public. (Someone was always there to yell, "Slow the blankety blank down," and she knew the rules.)

There was never a task too tough, even when The Babes thought otherwise. She smiled knowingly when they all landed flat on their asses.

"The Babes" had made a bet with the Traffic boys from Hell that they, the Brush Babes from Hell, could buck all the bales

in Miss Piggy's Lot before breakfast. (The Babes were suckered.) Halfway done with the task the Babes were offered another truck that claimed to hold a bigger load—The Babemobile was parked.

However, as she sat quietly on the sidelines, she watched...a bigger load does not necessarily mean a better load. The Babes got overconfident and over-loaded and were unceremoniously unloaded in the middle of the field. And the Babemobile continued to watch with the

rest of Main Camp, while the Babes "Rebucked" the same ole bales! (Oh, they also won the bet!)

It took some fast talking to calm her down the year she missed the entire Fair, having worked so hard prior to it. She had done a last bit of emergency work (on loan to the construction crew) and then was randomly parked by some burned-out carpenter before she could get "stickered." Along comes the BIG BAD TOW TRUCK and hauls her off to Veneta. She dug her wheels in and flattened her tires but none of that stopped the tow truck from it's dirty deed!

On Monday, she was found and rescued but she was one pissed-off puppy!

She beamed with pride last year when "The Puppy" allowed her to snuggle up to the protective wheelwells of the Peach Truck. She knew she wouldn't be towed while the Peach Truck stood guard. When those "all night sign painters" adorned her with two nameplates her flat bed swelled with pride. She was home for sure! Her nameplate will always be up front!!

We will miss you, Babemobile.

"The Babes": Reese, Sallie, Norma, Captain Madness, Sandra, Mac, and Dave Babe

Ode to the Babemobile

Reese Prouty, Brush Babe

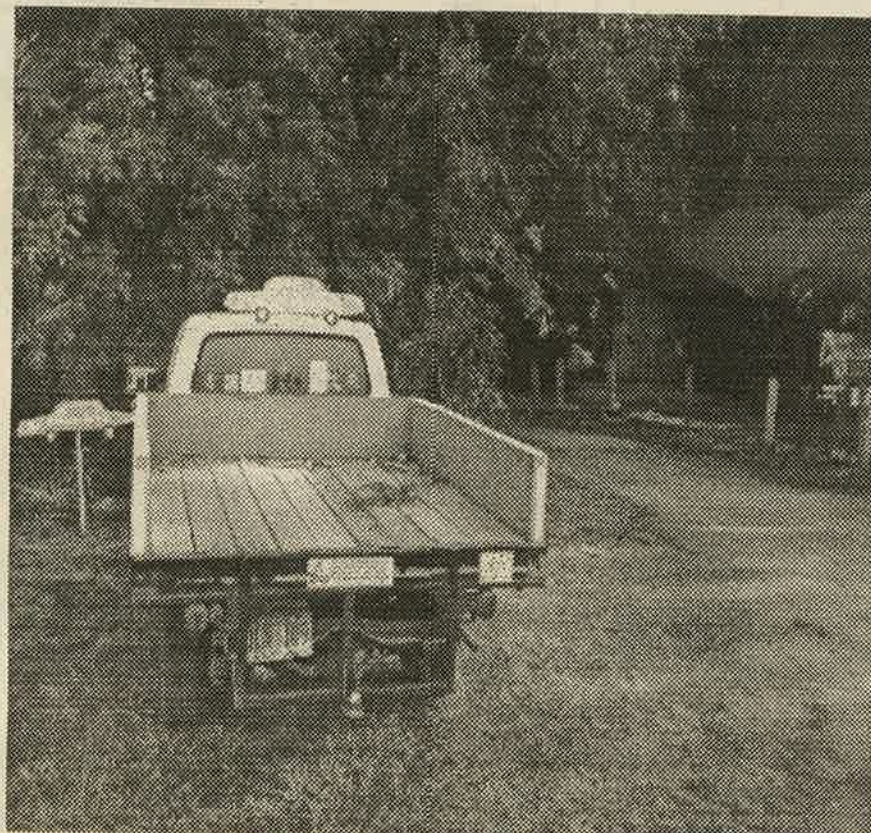


photo by norma sax, a brush babe in mourning

In all her glory



photo by Mary Shuler



Ralph Kramden Memorial Bus Stop

Do You See What I See?

Norma Sax

Feeling crunched by the crowds at the Fair? Wondering what to do about blanket vendors, emergency vehicles, food vouchers, and the Sweep? You're not alone. About 25 Fair family members gathered in September to evaluate the 1992 Fair, discuss problems that arose, and suggest possible solutions.

Participants divided into five groups of five to talk about several major issues facing the Fair, each group focusing on a particular broad topic.

After about 30 minutes of discussion, all the groups gathered together to share their discussions with all the participants.

Group 1, whose topic was the Parking Lots, was concerned with blanket vendors, general safety, towing, emergency vehicles, and the number of cars in the lots. Some suggestions were discount

tickets to bus riders, a parking lot safety crew to take care of blanket vendors, and purchasing bordering property to expand.

A discussion by Group 2 of problems inside the Eight included issues related to alcohol use, general safety procedures, after hours sweep, quality of life for visitors and Fair family, and paths and vehicle access. They discussed the possibility of more medical staff before and after the Fair, an admissions cap to control population, and better maps.

Operations/Infrastructure was the topic for Group 3. They grappled with communications—solutions booth, Main Camp, food vouchers, garbage, and construction. For the next Fair they would like to see more staff and longer

hours for the Solutions booth, possibly leaving the gate open until 9 p.m. on Monday, more equity in distribution of food vouchers, more sign painters, and banners telling people how to go home.

Group 4 had the task of figuring out how to make operations go more smoothly, focusing on emergency response, neighbors, management performance, camping issues, and pre-and post-Fair population.

They suggested there be an emergency response team, a year-round discourse with our neighbors, quiet camps or quiet spaces for camps, a ceiling on straw brought into the Fair, and finding jobs for SOPs.

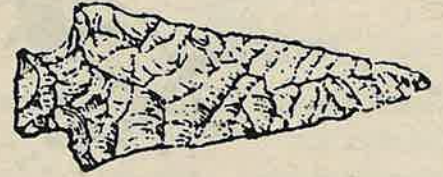
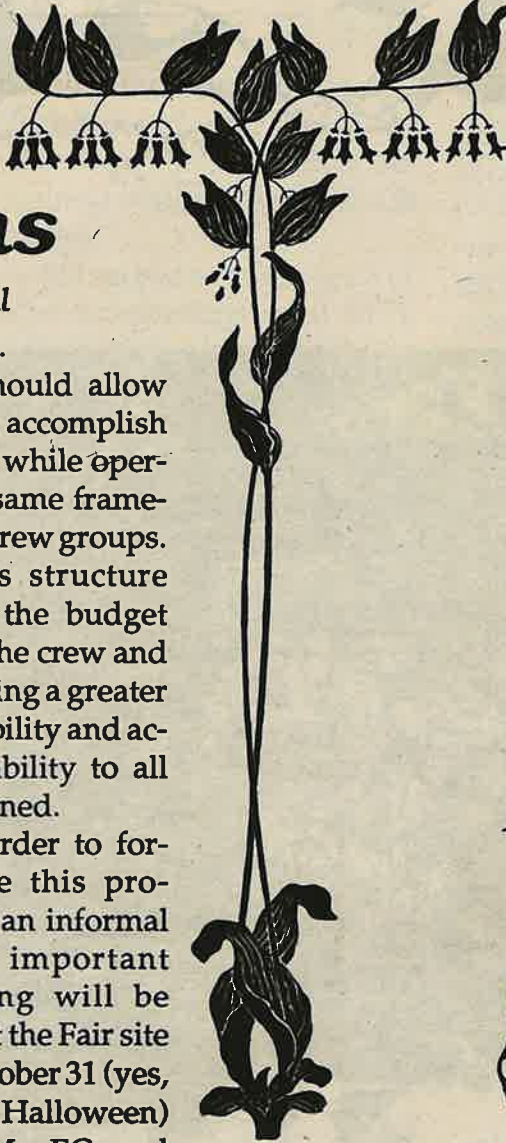
Recognizing that we may no longer be just a three-day event, Group 5 focused its dis-

cussion on Year Round Issues facing the Fair. They talked about the budget process, site management and use, office coordination, community relations, and the craft jurying process.

Suggestions from this group included opening the budget process to Fair members, expanding the site, making Vegemanecs and the Neighborhood Response Team official crews, focusing the endowment on the West Lane area, and including a coordinator's forum in the newsletter.

These are just some of the issues discussed and suggestions put forth at the Evaluation Meeting. You may have other ideas. Please share them with the Board and the General Manager through the newsletter or by direct mail to them. Your input as a Fair family member is vital to keep us going in a healthy direction.





Seeds & Stems

John Doscher, VegManEC Co-equal

As some rain has finally fallen on the site and the days have grown much shorter, I'm reminded every day that the one certain thing in all our lives is change. In order to stay in step with the world around us, we must all make changes to evolve as a whole.

This is true of the Fair itself as well as the Land and the people who make it happen. As time passes, some jobs and responsibilities change and evolve more than others.

The role of the VegManEC crew is one which has grown and evolved in just a few short years from a very casual, low key effort into a very serious commitment to long term management ideals with an eye open for possible educational opportunities, as well as the year-round, day to day work in support of the Caretaker.

With this evolution there has come more and more acceptance and credibility within the Fair family, but also the accompanying responsibilities.

From many directions within the Fair family, folk have expressed an interest in seeing the crew legitimized as a formal part of the organization. As a result, I hope to present the BOD with a proposal for granting crew status to VegManECs at the Decem-

ber BOD meeting.

This change should allow the crew to better accomplish the tasks at hand while operating within the same framework as all other crew groups. Establishing this structure should simplify the budget process for both the crew and GM as well as giving a greater sense of responsibility and accountability to all concerned.

"In order to stay in step with the world around us, we must all make changes to evolve as a whole."

In order to formulate this proposal, an informal but important meeting will be held at the Fair site on October 31 (yes, that's Halloween) at noon. All VegManECs and interested Fair family members with ideas or input are encouraged to participate or send your thoughts to:

VegMan, OCF
P. O. Box 2972
Eugene, OR 97402

The collective ideas I get from you all will be reflected in the proposal we submit to the BOD. The topics are open for discussion and hopefully will range from budget and crew selection, to how our role fits into the Fair's purpose as an educational and community service group.

Also, remember that even though we've had a little rain lately, your large shrubs and trees still need some deep watering before the first hard freeze.

Peace.



memories, I danced and shook the puppet over the altar. With the ashes, I encircled the altar and drew symbols derived from the passion and possession of the ritual.

I knew then that all rituals were best drawn from the moment of heart and mind feeling together. I felt released. I felt honored to hold his spirit close to me for a year, and then release me and his spirit at the Fair. Thank you all folks, as he and I dearly love the presence of the Fair's spirit.

At the end, I still had a bit of his ashes left, and I wandered around wondering what to do with them. Still carried away with the dance jam, I stopped in front of the drum tower.

Instantly, I remembered, and suddenly saw, my friend's spirit dancing in the frenzied thunder of the drums. He was so much the living pagan, and so much loved to dance at the tower. Then and now, I see my friend wiggling and jumping up and down, thoroughly alive in the moment.

Laughing, I jumped in among the dancers and drummers and spread Chris' ashes upon the ground. So my friend, and yours if you were to meet him, dances on with us for a few days and nights every year.

As for me, I'll be among you all next year, working to get the joint ready for the magical event, and looking for my friend's spirit in the air, joyful



Fair Thee Well

by Maque Davis, Fair Family



Just before the 1991 Fair, July 5th, my friend Chris Dewey died climbing a mountain in Washington. He had chosen between two visions we shared. I chose the Fair—a simple decision that has separated two good friends. I hung on to him and his ashes for a year, my grief unabated.

But with this year's Fair, a chance to release my grief came as an opportunity with the dance troupe "Risk of Change." Their dance jam on Sunday involved primitive rituals to gather up the tribe's energy for the movement

As I was searching for a release of my friend's loss from me, I decided to add a piece to that dance jam.

I arrived early this year to work at the Fair, and I allowed myself to meditate on releasing my friend's spirit. I knew he loved the Fair and the energies we all shared.

My creative energy juices flowed into a simple grass puppet tied up to represent my friend's spirit. And, in the dance jam, I carried a handful of his ashes in a crude leather pouch. Dressed in a loincloth and body symbolized with mud,

I represented death, and followed the life of the primitive tribe.

As the jam evolved, I stalked the trailing end of our tribe. I stayed the pressing throng of Fairgoers back to allow our space to develop with the dance jam. We traveled the circuit of the Eight, beating out our earthy music, and finding wonder in the "strange" surroundings of the Fair. And every so often, we found a safe place to build an altar.

At the last place, I came forth, and danced the death and releasing rite for my




organically grown
COFFEE 5# - \$20
socially responsible



Café Mam

Royal Blue Organics
28718 Royal Avenue
Eugene, Oregon 97402
(503) 689-1836

OUR UNDERWRITERS



Chef RAY SEWELL
chef

1473 E. 19th AVENUE
EUGENE, OR 97403
503/342-8596

Performance Security
Specialists



OREGON EVENT ENTERPRISES

Don Doolin 687-4613
John Doscher 935-2912

CALL TO ARTISTS!
OREGON COUNTRY FAIR



ANNOUNCES
THE 6TH ANNUAL
POSTER COMPETITION
FOR 1993

The Selected Artist will be
awarded \$800 - for the
Winning Design!
2 Finalists will each receive \$100

Submission deadline for Slides is Dec. 1, 1992
Call or write now For More Information
OREGON COUNTRY FAIR
POSTER COMPETITION
P.O. Box 2972
Eugene, OR 97402
Or Call
Camille 342-1736



USE THIS SPACE!!

This space is available for free 'Fair related' messages, announcements, requests etc. Examples include info. on crew/committee openings, information on work parties, and any other items of information that the Fair family needs to know about.

We are providing business card-sized underwriting space (3.5" X 2") for \$10. Classifieds for individuals are free. Suggested \$4 donation if a 'For Sale' space works.

If you want to place a Fair related message, or if you desire information on underwriting in upcoming issues, contact the newsletter staff c/o The Oregon Country Fair, P.O. Box 2972 Eugene, 97402 or call Business Manager, Brad Lerch at 689-1836.

Please submit before monthly board meetings.

The
TIKI
Lounge

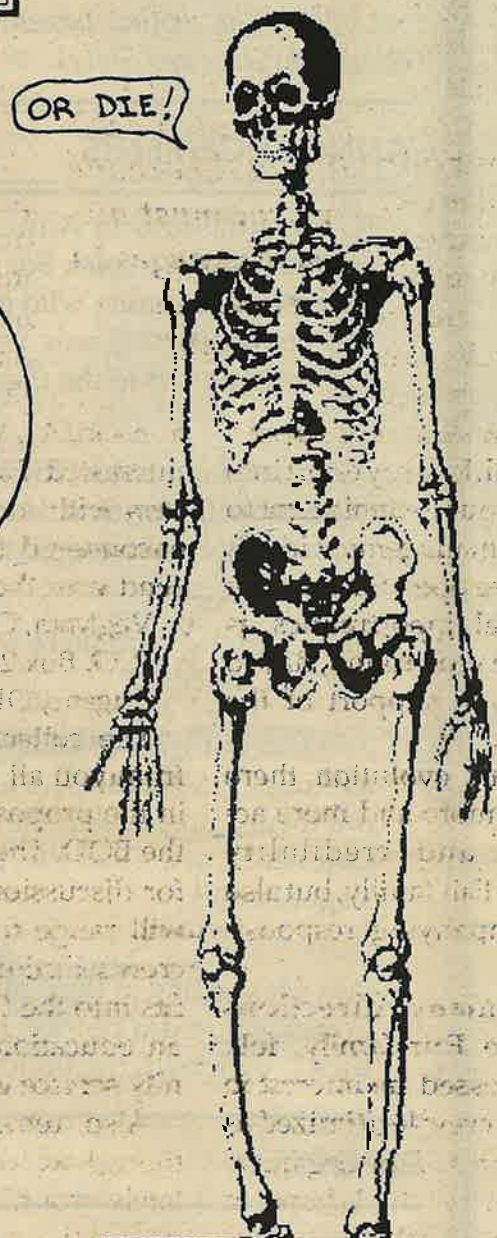
*Fine dining in an elegant
hurricane-ravaged setting*

*Open Friday
Highway 126, near Veneta*



Please vote; it's not
a privilege, it's a
Right!

tuesday, November 3



RECYCLE

Recently un- Classified Material

For Hire: Geyser Steam Cleaning-Environmentally sound dirt banishment. For prompt courteous service call; Jim Brannaman 344-0334, Licensed/Insured

For Sale: Laser 128 computer. Compatible w/Apple IIe. Great for 4-J student, \$120. 343-7860.

For Sale: Frozen Organic Blueberries! 20 lbs. for \$31. Call Royal Blueberries at: 689-1836.

For Sale: Ink-jet printer for Macintosh. Small, portable. \$175.00 obo. Norma, 343-4843.

Help Wanted: Reliable writers willing to be published in the Newsletter on a regular basis. Be a columnist for the Fair! Cartoons, verse, reminisces, crew developments, project up-dates needed. Deadline is the 1st of each month.



Answers to Crossword #4

C	O	M	M	U	N	I	T	Y	V	I	L	L	A	G	E
H	U	O		M	A		A		B		B		A		
I	N	F	O	R	M	A	T	I	O	N		B		B	U
L	O	F	T		A		T		S	A	F	E		T	
D				M	I	N	O	R	S		R		Y	E	T
C	A	S	H	I	N				E				E	A	R
A	D	D	M	I	S	S	I	O	N		N	E	O		I
R			S	E	T		F		A		A		R		R
E	M		T	R	A	P		A	M	I		O	E	S	T
	A		O		G	A	R	D	E	N	S			H	E
	S		U	R	G	E		A		S	T	P		B	Y
B	S		Y	E		A	N		T	R	I	T	E		N
C	A	D			F	I	G	U	R	E	E	I	G	H	T
	G	R	I	P		M	E		E		D			U	H
P	E	A	C	E	P	A	R	K	E	R		M		L	



BOARD OF DIRECTORS MEETING
OCTOBER 5, 1992

Present: Kelly Campbell, Dan Dillon, Thom Chambliss, Bob Durnell, Steve Gorham, Anne Henry, Paxton Hoag, Jim Sahr (alternate), Margo Schaefer, Jeanne Sharpy, Steve Wisnovsky

MINUTES

Motion: Thom moved to approve the September 14, 1992 meeting minutes as mailed. Bob seconded.

Background: Some Board members were waiting with baited breath to receive their minutes.

Vote: The motion passed, 7 for , 1 (Margo) opposed, 2 abstained (Steve and Steve).

ANNOUNCEMENTS

Congratulations to Autumn Henry Darwish who was smart enough to pick Board member Anne Henry to be her mom. Autumn, who met the world for the first time on September 19, was very gracious in letting Mom accompany her to the meeting.

Congratulations, too, to Charles Drew, former Construction coordinator, and Mary Gillam, former Teen Crew coordinator, who are getting hitched on November 1.

John Doscher said there will be a second highway clean up on October 17.

John is asking for comments throughout the Fair about making the VegeManEcs an official crew. He intends to put forth a proposal in the future. There is a meeting on October 31, at the Fair site, to discuss future crewdom for VegeManEcs.

Jack Makarchek of the Construction Crew clarified that Construction did not see Kirk Schultz as a "traitor" for Kirk's work with the Building Committee.

REPORTS

GENERAL MANAGER - Leslie Scott, General Manager, had lots of thanks: to the Elections Committee for their very hard work in making the elections happen smoothly; the VegeManEcs for the donation of a big leaf maple for the outside of the office; and to the people who are working on putting together a proposal for Measure 9. (Oh, there's more on this subject and you'll definitely want to stay tuned for that.)

Leslie apologized to anyone she may have hurt by remarks she made in the last newsletter. "It was an interview given in the spirit of love and with the greatest empathy for the problems that we've gone through. It was never intended to open any old wounds."

Leslie reported on the September 25 Evaluation meeting. About 25 attended a session to review several issues of concern at this year's Fair and brainstorm approaches to some of our problems.

Circus folks have decided to move and will be relocated to the 1992 WC Fields site. (No, not a grave in Philadelphia, and no, a grave in Philadelphia is not redundant. Go, Eagles, go.)

CARETAKER - Bill Verner, Caretaker, who was here

in person tonight because he heard Leslie did too good a job impersonating him last time, thanked all the usual suspects who help out at the site. Deconstruction is completed. Bill said we need to think about how much unnecessary junk we bring on to the site and how to reduce that volume. THERE ARE TOO MANY REFERS ON THE SITE. Bill urged everyone who has a refrigerator on the property to contact him to arrange for removal or relocation.

TREASURER - Nance Sledge, Treasurer, said this was her last Board meeting as Treasurer. (Yeah, Nance, thanks for a great job!!!) She urged anyone interested in the Treasurer position to contact the Fair office by November 1. She thanked all the coordinators who got their reports in.

BUDGET COMMITTEE - Nance said the Budget Committee is dealing with reconstructing itself, and had three recommendations: (1) a year-round financial management committee to work closely with the Board; (2) policy clarification from the Board on the following points: food vouchers, per diem, significant other passes, Board expenditures outside the existing budget process, and prioritization of capital projects.; (3) that the Board not appoint any new members until the restructuring is complete. The budget committee feels it would be more efficient to use consultants to help them in their task. The Committee would like Nance to stay on during reconstruction. Present Budget Committee members are: Deni Schadegg, Rebecca Harris, Kelly Campbell, Frank Sharpy, Leslie Scott, Nance Sledge.

ELECTIONS - Jim Guthrie said the Elections Committee sent about 275 absentee ballots. Things are moving along.

AGENDA

OFFICE MANAGER HIRING

Motion: Daniel moved the Board of Directors hire Camille Cole as Office Manager. Thom seconded.

Background: Camille Cole is the first recommendation of the Office Manager Hiring Committee.

Vote: The motion passed, 10 for-0 against.

CARETAKER RESIDENCE

Motion: Bob moved the new caretaker's residence be sited across the drive from in front of the current residence. Steve W. seconded.

Vote: The motion passed, 10 for, 0 opposed.

Motion: Bob moved that Bear Sullivan be named to the Building Committee. Steve W. seconded.

Vote: The motion passed, 10 for - 0 against.

ENDOWMENT

Motion: Steve moved that the definition of excess revenue be amended as discussed at the September meeting. Excess revenues are defined as gross event revenues, for example,

admissions, registration, sale of camping passes, and memorabilia less event expenditures, for example, crew costs, general manager budget, kitchen, food vouchers. This calculation does not include the cost of capital projects or costs not related to the current year's Fair. Thom seconded.

Background: This motion removes depreciation from the definition of excess revenues.

Vote: The motion passed, 10 for - 0 opposed.

Motion: Thom moved to establish the structure of a three-member endowment committee to provide oversight of endowment investments and implement grantmaking activities to distribute funds when available. Each committee member shall have a term of three years, except two of the three original appointees who shall have one and two year terms respectively. One member will be appointed by the Board of Directors at the beginning of the calendar year. The General Manager of the Fair or her designate will be a non-voting member of the committee and will provide staff assistance to the group. The Board will appoint the first Endowment Committee members in January 1993. Bob seconded.

Board Discussion: Steve G is unclear how final funding decisions should be made or by whom, the Endowment Committee or the Board. He would like to see the actual structure for giving money in place before any money is given away. Thom stressed that (1) the process is ongoing for completing grantmaking criteria and setting up systems for giving the money away, and (2) it is the strong sense of the Endowment Planning Committee that it would be positive to separate those giving money from the politics of the day to day operation of the Fair. Margo suggested that the separation of granting and the Board is a larger area that needs to be talked about. She wants to put the Endowment Committee together but feels this motion does not clarify the process.

Vote: The motion failed, 5 for, 3 opposed (Margo, Paxton, Kelly), 2 abstained (Daniel, Jeanne).

KIDS'S LOOP

Motion: Kelly moved to release funds set aside for the Kids Loop. Bob seconded.

Background: Several months ago, the Board voted to set aside \$2,000 to build a structure for the Kids Loop. Jill Liberty, Childcare Coordinator, said the Kids Loop has been a great success among those too big for Childcare but who need something kid-size to do. (Well, the secretary was going to say "...and too small to hang out at the Tiki Lounge", but she thought she'd get shot by Jill if she did.) The Committee would like to spend the \$2,000 to enlarge the loop, make it safer and more useful. This has the support of the Construction Crew, the General Manager, the Caretaker, the Teen Crew, and the Land Use Planning Committee.

Leslie said she looked into liability issues and said there are two criteria we must follow: (1) anything constructed has to be dismantlable; (2) nothing can be construed as a ride.

Board Discussion: Steve G. said he is not in favor because of liability issues and he is not clear what the money will spent for; the proposed expenditures did not seem to be worth \$2,000. He also is concerned that the volunteers who will staff the area will turn into another crew with t-shirt and pass requests. Margo felt the proposed climbing structure was not any more a liability than anything else at the Fair. Paxton is enthusiastic and wants to make sure the \$2,000 is spent for structures. Jeanne is also very enthusiastic and would very much like to see this happen. Anne and Steve W. expressed support for the committee and its process. Steve wondered, however, why this was not in the normal 1993 budget process. Thom cautioned that we be careful about staff increase.

Vote: The motion passed, 8 for, 2 (Steve G. and Daniel opposed).

BETTER INVESTMENTS

Motion: Steve W. moved the Board direct the Treasurer to invest \$200,000 in 6 month CDs, to invest \$100,00 at Key Bank and buy two \$50,000 CDs at Pacific Continental Bank. Margo seconded.

Public Discussion: Jack Makarchek strongly urged that we invest our money in a socially responsible manner and that short-term CD's were not meeting that criteria. Nance Sledge, Treasurer, said she and Leslie were advised by an investment counselor and Fair family member who specializes in socially responsible investing. She pointed out that in order to get a six month CD that would mature for next year's Fair we need to invest by October 15. Jim Guthrie asked if these investments would enhance or decrease the opportunity to buy land next door to ours if it becomes available in the next six months, Nance said there is an option to pull at least one of the CD's if we need the money.

Board Discussion: Kelly would rather we take a lower interest rate than invest in the military. Thom said the committee should work this out; he urged support for the motion with the understanding that the Treasurer and the General Manager will invest in a socially responsible manner. Bob felt that all options have not been explored and would like to see more research. Daniel pointed out that Key Bank makes low-interest loans to low-income people. Steve G. said every bank in the country invests in the government and that we shouldn't have more than \$100,000 in any one bank or we won't be insured for loss. (You never know when Neil Bush will get on the Board of a bank in Oregon.)

Vote: The motion failed, 2 for, 6 against (Steve G., Daniel, Margo, Paxton, Kelly, Bob). Jeanne and Anne abstained.

Motion: Steve G moved to direct the Treasurer to invest \$100,00 in one CD at Pacific Continental Bank.

Vote: The motion passed, 10 for, 0 opposed.

Motion: Steve G. moved to direct the Treasurer to invest \$100,000 in a socially responsible manner.

Vote: The motion failed, 3 for, 7 against (Daniel, Jeanne, Margo, Paxton, Kelly, Bob, Anne).

(Dashing the hopes of the Secretary for a trip to Tahiti, who was prepared to submit letters attesting to her enormous sense of social responsibility.)

Motion: Bob moved to direct the Treasurer and General Manager to invest and deposit OCF funds as needed under a policy that such investments shall be as socially responsible as possible first, and income producing second. It is the intent of this motion that no investment at any one institution exceed \$100,000. Anne seconded.

Public Discussion: Jack asked that a committee be formed to investigate this with the intention of getting away from banks.

Board Discussion: Some people felt the term "socially responsible" was too vague.

Vote: The motion passed, 7 for, 3 opposed (Daniel, Steve G., Kelly).

BALLOT MEASURE 9

Motion: Margo moved the Board contribute \$1,000 to Lane County No on 9, that the General Manager fill out the necessary IRS forms regarding political contributions, that the Board go on record as strongly opposing Measure 9, and that the Board encourages the OCF Oregon membership to vote against Measure 9.

Background: Those of you in Oshkosh are no doubt wondering what Measure 9 is. It is a ballot measure in Oregon that if passed, would amend Oregon's constitution to define homosexuality as "abnormal and perverse," and would encumber Oregon schools from kindergarten to graduate school to teach that homosexuality is "abnormal and perverse." No state agency would be allowed to "promote or facilitate" homosexuality in any way.

Public Discussion: Jack Makarchek dared the Board to be bold and make the contribution \$20,000, a sentiment echoed by Doe, Registration Coordinator. Many in the audience spoke in support of the motion. Jim Guthrie felt we need to get involved in education efforts to fight Measure 9.

Board and Officer Discussion: Anne is supportive of the motion but warned against getting "slap happy." Kelly said there are a lot of important issues and we need a system to decide what kind of political issues we'll support. Jim is opposed to a precedent setting policy of making political contributions. JR feels we should fight this measure on a personal level, but is not sure it is appropriate for the Fair to do it as a group. We have no structure for being a politically active organization. Norma (Secretary) said if anyone thinks this insidious, evil piece of garbage called Measure 9 doesn't affect the Fair they are sadly mistaken. Paxton predicts the Measure will lose so our contribution is superfluous. He thinks we need to encourage our membership to vote. He also feels the residents of Veneta will be offended if we take a stand. Margo read a statement from a Fair member, "We seek to create a vision of love, peace, trust, justice, cooperation and quality in social service." She pointed out we frequently make policies and decisions without a specific structure in place and we frequently make exceptions to our process to do this kind of thing. It only sets a precedent if we agree it sets a precedent. Margo encouraged everyone to look in their hearts for what this discussion is about - would we be having it if the target group were Blacks or Hispanics? Daniel would prefer us to have a structure in place to deal with political issues and last minutes requests for expenditures. Steve G. feels it is not appropriate for the OCF to get involved in political issues. Jeanne is in support of donating to No on 9, but expressed frustration that the budget process is not in place to make it easy to do. Bob said it is not unusual for non-profits to make a statement or contribution regarding this measure; many have done so.

Vote: The motion passed 7 for, 2 opposed (Steve G., Paxton), 1 abstained (Kelly).

Motion: Margo moved that the Board refer to the membership an initiative to have the OCF contribute \$25,000 to No on 9.

Vote: The motion failed, 2 for, 8 opposed (Steve G., Steve W., Anne, Kelly, Paxton, Daniel, Thom, Jeanne).

CULVERTS

Motion: Steve G. moved to authorize the General Manager to spend \$211.86 to buy two bus culverts. Bob seconded.

Background: The culverts to widen the bus road were put in by Field Trip Productions in anticipation of the concert that never was. They asked that we pay the construction costs. Leslie said she has the authority to approve, but she felt uncomfortable doing so without guidance from the Board.

Board and Officer Discussion: JR feels that while these culverts are an asset to the Fair, he feels uncomfortable spending money on any project before the budget process is completed. JR suggests the issue be tabled. Steve G. sees this an important investment for the Fair. It would potentially save us from no access to that side of the Fair because if we lose access to Trotter's road, the bus road will be our main access to the Fair. (Lot of access there.)

Vote: 10 for, 0 opposed.

TRACTOR FRONT LOADER

Motion: Bob moved the Oregon Country Fair commit an additional \$1,000 to put with the \$3,000 left from the \$10,000 allocation for purchase of the tractor to purchase a \$4,000 front end loader. Steve W. seconded.

Background: The tractor purchased this spring did not come with a front end loader and many people see many uses for one, including turning the compost.

Vote: The motion failed, 3 for, 7 opposed (Jim, Steve G., Daniel, Margo, Paxton, Thom, Kelly). (Autumn left and took Anne with her, so Jim voted as alternate.)

POSTER CONTEST

Motion: Thom moved the Board permanently allocate \$1,000 for finalists in the poster contest with disbursement to be determined by the Poster Committee. Margo seconded.

of two semi-finalists will be awarded \$100.

Board Discussion: Bob likes the process we had in place before, doesn't want to change it. Thom, Kelly, and Margo felt this was a positive gesture to make to our community of artists.

Vote: The motion passed, 9 for, 1 opposed (Bob).

ARCHAEOLOGY

Motion: Margo moved to appoint Bill Burwell as Archaeology co-coordinator. Jim seconded.

Vote: The motion passed, 10 for, 0 opposed.

NEXT MEETING

Tuesday, November 10, 1992, WOW Hall, 7 p.m.
Agenda: Field Trip, Electrification, Population Control, Ban Alcohol, Endowment, Security Childcare.



minutes by

